



Adaptive sheet



ADAPTIVE

ACIDE HYALURONIQUE(AH) VECTORISÉ
(VECTORIZED HYALURONIC ACID (HA))

What is an adaptive?

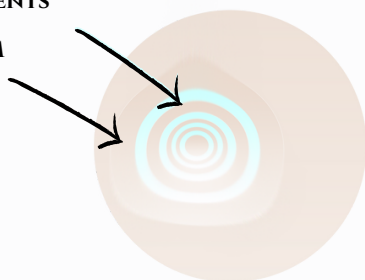
It is a concentrate of cosmetic ingredients, to be added to your skin care routine every day, in a few drops. This adaptive is a vectorized HA that helps the skin regain its volume and fullness. The vectorization is ensured by multilayer microspheres that encapsulate the HA.

Characteristics

Multiple layers encapsulating hyaluronic acid in the form of sodium hyaluronate

SPHERE BILAYER->LIPOPHILIC AGENTS

AQUEOUS PHASE -> SODIUM HYALURONATE



Did you know that?

The skin contains more than 50% of the hyaluronic acid (HA) in our body. As a key component of the dermis, HA keeps the skin smooth and plump. The level of HA gradually decreases over time, due to an imbalance of synthesis/degradation. It is estimated that by the age of 50, people have lost half the amount of HA they had in their youth. The skin dries out and loses its "baby skin" softness.

Information

The adaptive contains a high molecular weight hyaluronic acid (1 to 1.4 MDa) encapsulated in a patented microencapsulation technology. This technology allows the Hyaluronic Acid to penetrate the deepest skin layers and gradually release the hyaluronic acid in the site of activity, targeted for a lasting effect. Hyaluronic acid is produced by a biotechnological process using lactic bacteria and a renewable plant substrate.

Patented microencapsulation technology.
Several modes of action:

Penetration
Adhesion
Penetration enhancer
Controlled release over time

Composition :

Encapsulated sodium hyaluronate

Origin:

Microencapsulation and biotechnology

INCI :

Water (and) Sucrose palmitate (and)
Tocopherylacetate (and) Glyceryl linoleate (and)
Sodium hyaluronate (and) Benzyl Alcohol (and)
Potassium Sorbate

Appearance :

Light white fluid cream



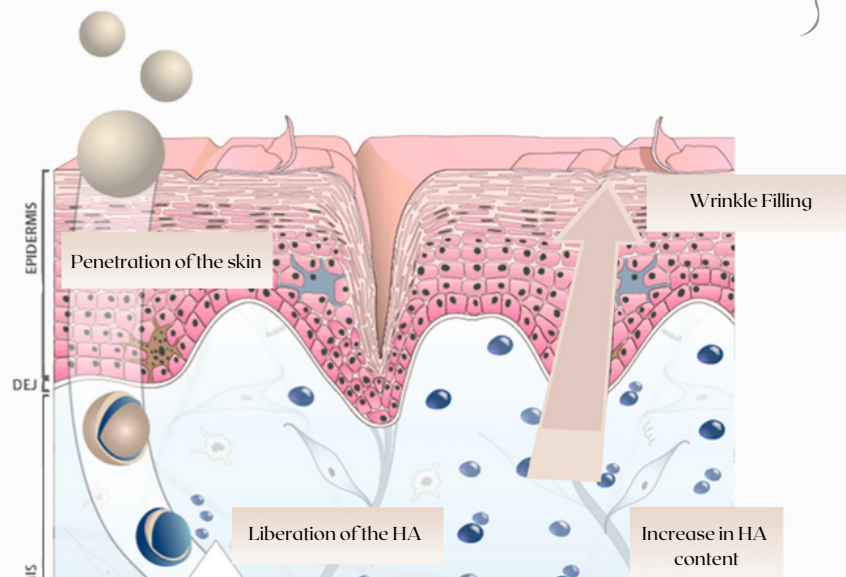
Frequency and area of application

1 to 2 times a day

Face

How to use it

Apply 3 or 4 drops in your cream and mix with your hand to then apply it directly on your skin.





Environmentally friendly
process, without organic
solvents

Dimensions

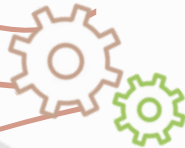
DDM

1 label size

H 70 mm x W 108 mm

(To be confirmed
according to the
chosen packaging)

18 month



YOUR BRAND

ACIDE

HYALURONIQUE

VECTORISE

(Vectorized hyaluronic
acid (HA))

20 or 30ml

Ingredients: Water (and) Sucrose
palmitate (and) Tocopherylacetate
(and) Glyceryllinoleate (and) Sodium
hyaluronate (and) Benzyl Alcohol (and)
Potassium Sorbate

Directions for use : Apply 3 or 4
drops in your cream and mix with
your hand to then apply it directly
on your skin.

External use.

To be used preferably before the
end of the season: see under the
bottle

Your address